

# The Japanese School System

## High School in Niigata



# I The Structure of Japanese Schools

## 1 The Japanese Education System



Age 24	Graduate School (2 or 5 years)				
Age 22	University (4 yrs.)		2-Year College (2 yrs.)	Trade School (1-4 yrs.)	Specialized Vocational High School (5 yrs.)
Age 20					
Age 18	Late-Secondary Education School (3 yrs.)	High School (3 yrs.) Full-time (3 yrs.), Part-time or Correspondence High School (3-4 yrs.)			Special Training High School (1-3 yrs.)
Age 15	Lower Secondary Education School (3 yrs.)	Junior High School (3 yrs.)			
Age 12	Elementary School (6 yrs.)				
Age 6	Preschool / Kindergarten				

### (1) The 6・3・3・4 System

The Japanese education system consists of a 6・3・3・4 system: 6 years of elementary school, 3 years of junior high school, 3 years of high school, and 4 years of university (or 2 years of college).

### (2) Compulsory Education

Under the compulsory education system, all children are required to attend and graduate both elementary and junior high school. Although the compulsory education requirement applies only to Japanese nationals, non-Japanese children between the ages of 6-15 living in Japan are able to attend elementary and junior high school at the same cost as Japanese children regardless of nationality.

Additionally, in 1994, Japan ratified the Convention on the Rights of the Child adopted by the UN General Assembly in 1989.

This convention mandates that the right of all children to an education must be recognized. While Japan does not mandate that guardians of non-Japanese children must have their children receive an education, children are guaranteed their right to one.

### (3) After Graduating Junior High School

Students must choose their own course upon graduating from junior high school. In Japan, over 98% of students attend high school.

There are also special training and vocational schools where students can learn the skills required for various trades.

As there are many different kinds of schools, students need to think thoroughly about future plans and what type of high school they want to go to.

### (4) High School Entrance Requirements

Students entering high school must be 15 years of age or older and have finished compulsory education.

Those who finish the equivalent of compulsory education in a foreign country (9 years) and have a certificate or diploma are also eligible to enroll in high school.

An exam equivalent to the completion of junior high school is also available in place of graduation certification. (See Page 7)

In addition to the above, students must also pass a high school entrance examination. (See Page 4)

## 2 Reasons for Going to High School

(1) High school increases options in the future.

In Japan, many companies require workers to have graduated high school. Those who graduate from high school are able to work in many more fields. High school graduates are also qualified to go on to college, junior college, or vocational school.

(2) Students learn important social skills through their days at school.



## II High Schools in Niigata

### 1 Types of High Schools

#### (1) Public and Private

There are 3 types of high schools in Niigata: public (run by either the Niigata Prefectural Government or a municipal government), private, and national vocational (run by the national government).

The entrance examination and school fees are different between public and private schools.

The following information is about public schools.

#### (2) Enrollment Courses

There are 3 types of enrollment in high schools: full-time, part-time, and correspondence courses.

Enrollment course	Class schedule	Hours of study per day	Years until graduation	Course of study
Full-time	Mon. through Fri., 8:30am- 3:30pm	-50-minute classes -6 classes per day -Club activities	3 years	-General, -Specialty -Integrated
Part-time	-Mon. through Fri. -"grade system": evening classes (6:00pm to 9:00pm) -"credit system": Morning and/or evening classes, depending on the school.	- "grade system": 4 classes per day. -"credit system": 50-minute classes Students create their own schedules -Club activities	- "grade system": 4 years -"credit system": 3+ years	General
Correspondence	Generally, study takes place at home. Students must go to school 2 to 3 times a month to receive direct guidance from a teacher. Students are able to graduate if they pass all of their reports and tests.		3 or more	General

※ Among the three enrollment categories, several schools have adopted a “credit system.” (In the “credit system,” students are not divided by grade/year. Any student who obtains the required numbers of credits can graduate.)

#### (3) Courses of Study

High schools have "courses of study" as can be seen above. These are divided into 3 courses based on the main area of study: general, specialty, and integrated.

Some schools have more than 1 course of study available.

##### ① General Course

Students focus on learning general subjects such as Japanese, math, and English.

Many students want to go to university or work for a company after graduation.

Names of the types of high school courses: General, General • Research, General • Science and mathematics, etc.

## ② Specialty Course

Students take classes that specialize in subject areas related to their career path, as well as classes such as music.

**Agriculture** - Students learn a variety of things about agriculture and forestry such as vegetable and flower cultivation, food processing, and so on.

Courses: Production Technology, Environmental Science, Food Science, Biological Resources, Human Life and the Environment, etc.

**Industry** - Students learn the fundamentals of industry and machine operation through manufacturing, or *monozukuri*.

Courses: Machinery, Machine Systems, Electricity, Architecture, Public works, Industrial chemistry, Electronic machinery, Industrial master, Japanese architecture, etc.



**Commerce** - Students learn practical knowledge and skills necessary for businesses such as bookkeeping, accounting and business information.

Courses: Commerce, Information processing, Integrated business, Information business

**Family Management** - Students learn basic knowledge and skills needed for daily life such as cooking, sewing and child care.

Courses: Home Economics, Foods, Lifestyle

**Fisheries Science** - Students learn such things as how to operate a fishing boat, fish farming and food processing.

Courses: Marine Resources, Marine Development

**Others** - Refers to the following courses:

Science and Mathematics: Students learn advanced science and math to pursue careers in healthcare and the sciences.

English, Science, and Math: Students specialize in English and information utilization.

Music: Students focus on subjects such as piano, instruments, and singing to pursue careers in music.

International Cultural Studies: Students take enhanced English classes in order to pursue a career in the global marketplace.

International Studies: Students acquire practical skills in subjects such as English communication.

Information Technology: Students take enriched math and science classes in order to be successful in an information-oriented society.

## ③ Integrated Course

Students learn general subjects, such as Japanese and math, along with specialized elective subjects in their field of interest. Students can create their own class schedule. Integrated studies follow the credit system.

Please take a look at available materials to know what kind of courses each school has. There is additional information on the website of the High School Education Division of the Niigata Prefectural Bureau of Education (<http://www.pref.niigata.lg.jp/kotogakko>). Please consult these materials for more information about private or special vocational schools (e.g., Nagaoka Technical College), and feel free to direct questions to each school.

## (4) School Districts

For Niigata Prefectural public high schools and Niigata City public high schools, students may freely choose which school they want to apply to from among the ones in the prefecture

according to their preferences and future plans.

### **(5) How to Decide**

There are a variety of schools and courses in Niigata. It is important for students to talk with their family and teachers about what kind of job they would like to have in the future, academic interests, and so forth.

A good way for students to gather information is to attend the information sessions and open campuses held for junior high school students at schools they are interested in.

Admission to a high school cannot be gained without taking and passing an entrance examination. Each school has a different standard score for passing. It may not be possible to attend a desired high school with insufficient scores. Students must think about not only their own preferences but also their academic abilities when selecting the high schools.

## **2 Entrance Examinations**

### **(1) Entrance Examination**

Students must pass an entrance examination to enter a high school. There are multiple kinds of entrance exams for Japanese public high schools: the specialized exam, the general exam, second-stage examinations for filling vacancies, and special selections for returnee students.

There are second-stage examinations for filling vacancies in case the number of students passing the general exam is less than the number of openings. Additionally, if the student meets the requirements, they may take the general exam, the second-stage examination for filling vacancies, or the special examination for returnee students.

The number of openings at each high school will be announced by the end of October.

For information concerning exams and dates at private schools, please contact the individual schools directly.

#### **① Specialized Exam**

Students who excel in sports, cultural activities, or the sciences, and who will continue those activities after entering high school may take the specialized exam. Potential applicants must meet the requirements set by the board of education, and have a recommendation from their junior high school. Some schools have not implemented the specialized exam.

All applicants will be interviewed individually. Additionally, some schools will have other necessary examinations.

Those who pass the specialized exam and submit a commitment form may not take the general examination.

#### **② General Examination**

All schools hold the general examination in all departments. Potential students can only take the exam for one department at a school, but some schools allow applications to another department as a second choice.

Exam Subjects:

Full-time course: Achievement tests (Japanese, social studies, math, science and English)

Part-time course: Achievement tests (Japanese, math, English) and an interview in Japanese. Those who are 20 years of age or older

and are applying for the part-time course may take a composition examination instead of the achievement tests in 3 subjects.

Additionally, there are schools that carry out their own individual examinations.

#### **③ Second-Stage Examination for Filling Vacancies**

If the number of successful applicants is less than the number of openings, the school will hold a second-stage examination.

Only those who did not pass any other secondary school entrance exams may take this exam. “Secondary Schools” includes any high school (private or public, either within Niigata or outside),

special needs high school, or vocational high school. Students who passed another high school's exam but have declined admission cannot apply for this exam.

However, those who are able to take this examination who have also passed the “selection for incoming students applying for private schools that can also be used to apply for prefectural schools” can apply for second group selection to fill in spots in schools that do not have enough students.

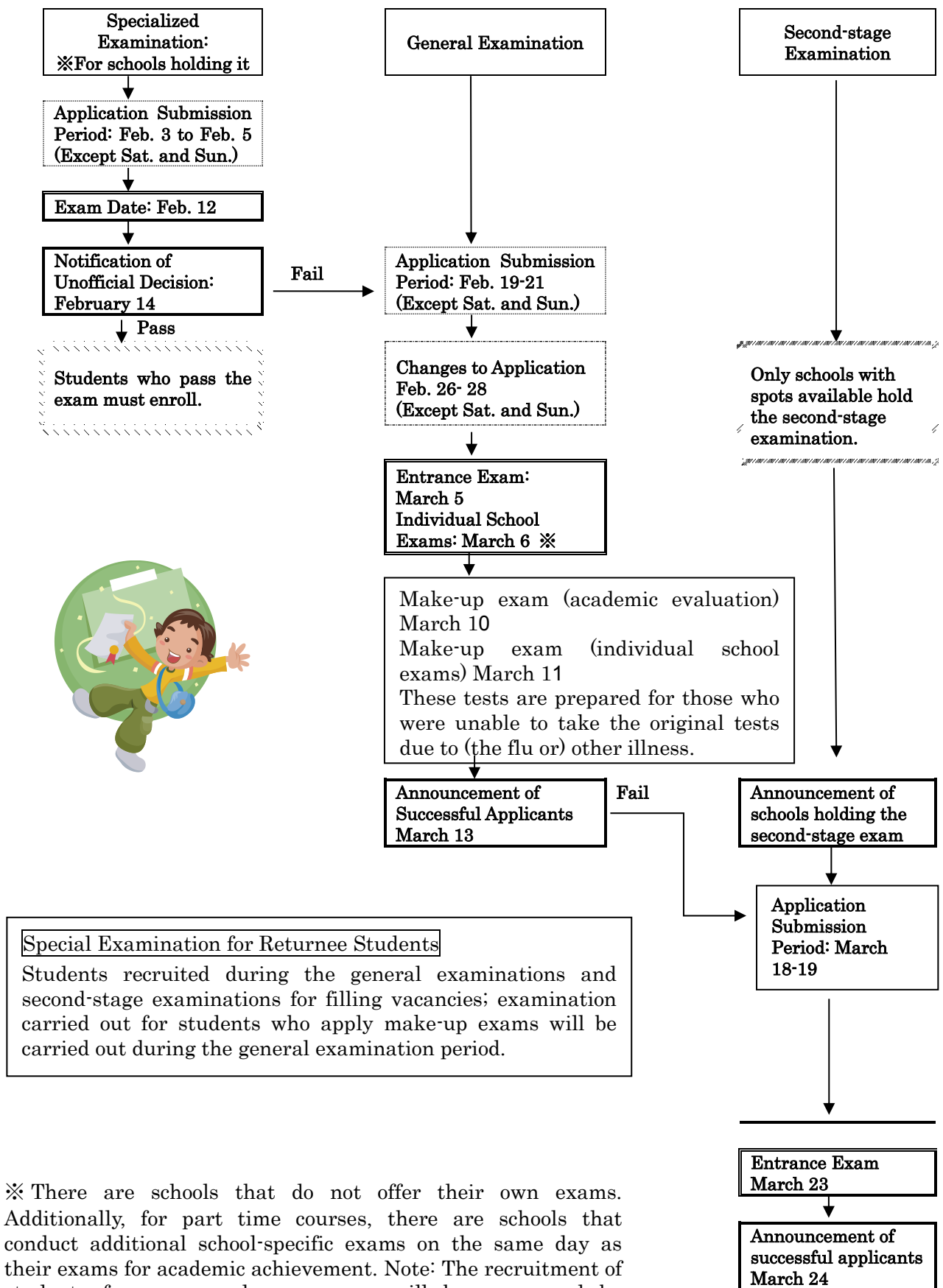
The examinations for both the full-time course and the part-time course cover 3 subjects (Japanese, English, and math) and include an interview. Additionally, there are places that carry out other examinations as necessary.

#### **④ Special Examination for Returnee Students**

Held for schools and courses during the general examination and the second-stage examination for applicants. This exam is for students who spend 2 or more years abroad and have returned to or newly entered Japan with their guardians after April 1st, 2018, and who wish to take the special examination. Students should discuss their specific situation with their middle school teacher to determine if they are eligible.

The test includes achievement tests (in Math and English), a written portion (written in Japanese) , and an interview. Schools may have their own additional unique examinations.

## (2) Examination Schedule (2020)



※ There are schools that do not offer their own exams. Additionally, for part time courses, there are schools that conduct additional school-specific exams on the same day as their exams for academic achievement. Note: The recruitment of students for correspondence courses will be announced by November.

### (3) Additional Information

The content of the examination and the number of openings vary for each high school. Please ask each school directly, a teacher at your junior high school, or contact one of the numbers below to check the details.

#### 【Contact Information】

#### ① Entrance Examination for Prefectural High Schools :

Niigata Prefecture Bureau of Education, High School Education Division,  
Instruction Section (office in charge of high school guidance)

TEL : 025-226-3263 FAX : 025-285-7998

<http://www.pref.niigata.lg.jp/kotogakko/>

#### ② Entrance Examination for Municipal High Schools :

Niigata City Board of Education, School Support Division

TEL: 025-226-3261 FAX:025-230-0432

<http://www.city.niigata.lg.jp/kosodate/gakko/index.html>

## 3 About the Junior High School Equivalency Exam

### (1) Junior High School Exam that is equivalent to graduation from junior high school

If students who have not graduated from junior high school wish to take a high school entrance exam, they are required to take the “Junior High School Equivalency Examination” held by the Ministry of Education, Science and Culture.

Application period: August 19 to September 6, 2019

Exam Date: October 24, 2019

Announcement of Results: Planned for December 2, 2019 (Delivery may take several days)

Testing location: The test can be taken in any prefecture.

Please contact the **Examination Review Office of the Niigata Prefecture Bureau of Education, High School Education Division** for further information (TEL: 025-280-5609).

### (2) Graduates of junior high schools in foreign countries

Students who graduated from junior high school in a foreign country who wish to take the Niigata Prefecture high school entrance exams are required to submit documents verifying graduation from the last school they attended (completion certificate, transcript) to the high school to which they wish to apply.



## 4 High School Life in Japan

### (1) Differences from Junior High School

In high school, students have to collect “credits”. One credit equals one hour of class work per week, done over the course of a year (35 total hours). Classes that are held 3 times a week equal 3 credits, and those that are held 4 times a week equal 4 credits. Students can receive credits when they achieve a certain result through a year. If they cannot get a sufficient number of credits, there is a possibility that they cannot pass their grade or graduate from their school.

It is also difficult to come back to school after a long absence unless there is an unavoidable reason such as illness.

Also, if a student is found to be bullying another student(s) and does not improve his or her behavior, he or she may be suspended or expelled.



## (2) Tuition and Fees (Reference: 2018)

	Public high school		Private high school
	Full-time course	Part-time course	Full-time course
<b>Entrance examination fee</b>	¥2,200 (Niigata Prefecture revenue stamp at prefectural high schools; cash at Niigata City high schools)	¥950 (Niigata Prefecture revenue stamp at prefectural high schools; cash at Niigata City high schools)	¥10,000 to ¥20,000
<b>Entrance fee</b>	¥5,650	¥2,100	¥90,000 to ¥180,000
<b>Tuition fee</b>	¥9,900 per month	※See graph below	From About ¥262,800 to ¥564,750

※Tuition fees for Part-time courses at public high schools

Non-credit-based courses	¥2,700 per month		
Credit-based courses	Year-long courses	1 credit: ¥145 per month	
	Half-year courses	1 credit: ¥290 per month	

※These costs are estimates, so please contact each school for further information.

※In addition to these costs, there will be around ¥100,000 to ¥150,000 in fees for textbooks, gym uniforms, sport shoes, uniforms, PTA tax, student council tax, etc.

※To lighten the financial burden of families under a certain income, the national government provides financial aid for school attendance (Full day national and public high schools: ¥118,800 per year, private high schools: ¥118,800 to ¥297,000 per year).



## 5 Scholarships

### (1) Scholarships

A scholarship is a grant or payment to support students of high schools and specialized vocational high schools. There are two kinds of scholarships. One kind must be paid back in the future, and the other kind does not have to be repaid.

#### ① Niigata Prefectural Scholarships (Repaid)

These scholarships are provided by Niigata Prefecture. Students must pay the sum of the scholarship back within 15 years after graduating from high school. There are additional qualifications to be eligible to apply, such as annual income and academic ability.

Students can make an advanced reservation to apply in November of their third year of junior high school, or else they can apply in May after entering high school.

High school students who have been chosen to receive scholarships can borrow money with the requirements below.

National・Public high school		Private high school	
Lives with parents	Lives alone	Lives with parents	Lives alone
¥18,000/month	¥23,000/month	¥30,000/month	¥35,000/month

Please contact the **Financial Aid Office of the Niigata Prefecture Bureau of Education, High School Education Division** for further information (TEL : 025-280-5638).

#### ② Niigata City Scholarship System (Repaid)

These scholarships are provided by Niigata City. Only foreign residents who qualify as permanent residents, or whose parents or guardians qualify as permanent residents of Niigata City, have good grades and need financial support can apply. However, those who do not have to pay tuition due to the “Act on Free Tuition Fee at Public High Schools and High School Enrollment Support Fund” as well as those receiving tuition support through a social-welfare allowance do not qualify.

Applications open in June, and a maximum amount of ¥200,000 can be borrowed per year. After graduating from high school, the scholarship must be repaid. The repayment period and amount to be repaid depend on the amount received through the scholarship.

For more information, please contact **the Niigata City Board of Education School Affairs Section (TEL : 025-226-3168)**.

## **(2) Tuition Exemption System**

### **① Prefectural High Schools**

Depending on the financial situation of a student's family, the student may be fully or partially exempt from tuition or entrance fees.

For more information, please contact the **Niigata Prefecture Bureau of Education Financial Affairs Division (TEL : 025-280-5590)**

### **② Private High Schools**

In order to reduce parents' financial burden, private high schools have a system that reduces the students' costs for things such as tuition and entrance fees. For more information, please contact the **University and Private Education Institution Promotion Division's Support Group (In charge of private education) (TEL: 025-280-5020)**.

## **6 Open Campuses**

The majority of high schools in Niigata have "Open Campus" programs for junior high school students considering their future plans. These programs allow prospective students to visit classes and extracurricular activities, and to speak with students currently attending the school.

Many schools will be holding these programs during the months between July and October, so students considering attending any particular schools can try being a "student for a day!"



## Reference

- Map of Public High Schools
- High Schools in Niigata Prefecture

Public High School : Full-Time Course

Public High School : Part-Time / Correspondence Courses

Private High School : Full-Time Course

Private High School : Correspondence Course

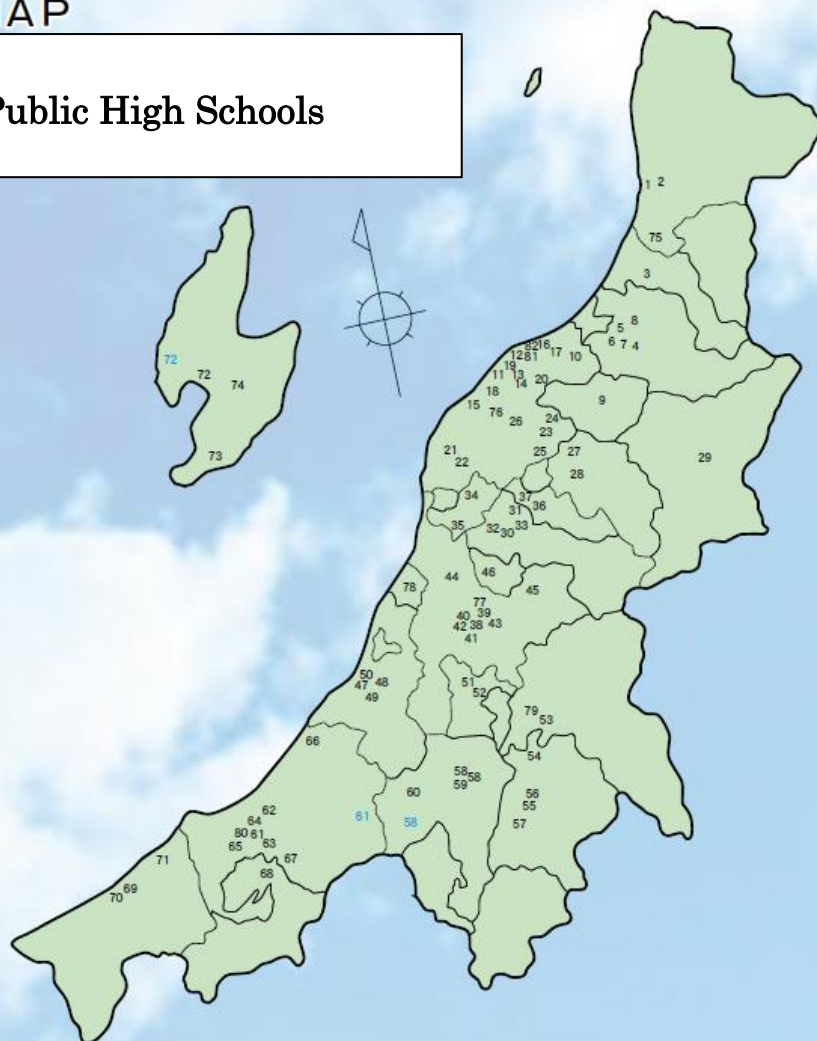
### 【Warning】

Courses of study at each school have until October 2019 to decide whether or not to accept students for the 2020 school year.

The schools and courses of study written here are subject to change.

# 公立高等学校MAP

## Map of Public High Schools



◎地図中の番号は各高等学校のおよその位置を示しています。

NO.	県立高等学校	NO.	県立高等学校	NO.	県立高等学校	NO.	県立高等学校	NO.	県立高等学校	NO.	県立高等学校	NO.	県立高等学校	NO.	県立高等学校	NO.	市立高等学校
1	全 日 制	14	全 日 制	26	全 日 制	38	全 日 制	50	全 日 制	61	全 日 制	72	全 日 制	75	定 時 制	81	全 日 制
2	村上	15	新潟江南	27	白根	39	長岡	51	柏崎工業	61	高田	73	佐渡	75	荒川	81	市立万代
3	村上桜ヶ丘	16	新潟西	28	五泉	40	長岡大手	52	小千谷	62	高田安塚分校	74	羽茂	76	西新発田	82	定 時 制
4	中条	17	新潟東	29	村松	41	長岡向陵	53	小千谷西	63	高田北城		佐渡総合	76	新潟翠江※	82	市立明鏡
6	新発田	18	新潟北	30	阿賀黎明	42	長岡農業	54	小出	64	高田農業			77	長岡明德		
7	新発田南	19	新潟工業	31	三条	43	長岡工業	55	国際情報	65	上越総合技術			78	出雲崎		
8	新発田農業	20	新潟商業	32	三条東	44	長岡商業	56	六日町	66	高田商業			79	堀之内		
9	新発田商業	21	新潟向陽	33	新潟県央工業	45	正徳館	57	八海	67	久比岐			80	十日町		
10	阿賀野	22	巻	34	三条商業	46	栃尾	58	塩沢商工	68	有恒				高田南城※		
11	豊栄	23	巻総合	35	吉田	47	見附	59	十日町	69	新井			72	佐渡相川分校		
12	新潟	24	新津	36	分水	48	柏崎	60	十日町松之山分校	70	糸魚川						
13	新潟中央	25	新津工業	37	加茂	49	柏崎常盤		松代	71	糸魚川白嶺						
	新潟南		新津南		加茂農林		柏崎総合				海洋						

○分校は、本校と同じ番号で、青字で示しています。

※新潟翠江、高田南城は通信制も併置されています。

\*All schools listed below are Niigata Prefectural Schools except those marked with an asterisk.

## Public High Schools: Full-Time

Name	Address	Telephone	Courses of Study
Murakami High School	〒958-0854 Murakami-shi Tabata-machi 7-12	0254-53-2109	General
Murakami Sakuragaoka High School	〒958-0856 Murakami-shi Iino Sakuragaoka 10-25	0254-52-5201	Integrated
Nakajo High School	〒959-2643 Tainai-shi Higashi Honcho 19-1	0254-43-2047	General
Shibata High School	〒957-8555 Shibata-shi Yutaka-cho 3-7-6	0254-22-2008	General Science and Math
Shibata Minami High School	〒957-8567 Shibata-shi Daiei-cho 3-6-6	0254-22-2178	General Mechanical Engineering, Electronic Information Engineering, Architectural Engineering, Civil Engineering
Shibata Nogyo High School	〒957-8502 Shibata-shi Daiei-cho 6-4-23	0254-22-2303	Biological Resources, Food Science, Environmental Science
Shibata Shogyo High School	〒957-8558 Shibata-shi Itajiki 521-1	0254-26-1388	Commerce, Information Processing
Agano High School	〒959-2032 Agano-shi Gakko-cho 3-9	0250-62-2049	General
Aga Reimei High School	〒959-4402 Higashi Kanbara-gun Aga-machi Tsugawa 361-1	0254-92-2650	General
Gosen High School	〒959-1861 Gosen-shi Awashima 1-23	0250-43-3314	Integrated
Muramatsu High School	〒959-1704 Gosen-shi Muramatsukou 5545	0250-58-6003	General
Niitsu High School	〒956-0832 Niigata-shi Akiha-ku Akiha 1-19-1	0250-22-1920	General
Niitsu Kogyo High School	〒956-0816 Niigata-shi Akiha-ku Niitsu Higashi-cho 1-12-9	0250-22-3441	Industrial Master, Industrial Production, Robotics, Japanese Architecture
Niitsu Minami High School	〒956-0113 Niigata-shi Akiha-ku Yashiroda 3200-1	0250-38-2912	General
Toyosaka High School	〒950-3343 Niigata-shi Kita-ku Kamidochigame Omagari 761	025-387-2761	General
Niigata Kita High School	〒950-0804 Niigata-shi Higashi-ku Honjo 847-1	025-271-1281	General
Niigata Higashi High School	〒950-8639 Niigata-shi Higashi-ku Kogane-cho 2-6-1	025-271-7055	General

Name	Address	Telephone	Courses of Study
Niigata Shiritsu* Bandai High School	〒950-8666 Niigata-shi Chuo-ku Nuttari Higashi 6-8-1	025-241-0193	General, English, Science and Math
Niigata High School	〒951-8127 Niigata-shi Chuo-ku Sekiya Shimokawara-machi 2-635	025-266-2131	General, Science and Math
Niigata Chuo High School	〒951-8126 Niigata-shi Chuo-ku Gakkocho-dori 2-bancho 5317-1	025-229-2191	General General・Research Course Food Music
Niigata Minami High School	〒950-0994 Niigata-shi Chuo-ku Kamitokoro 1-3-1	025-247-3331	General, General・Science and Math Course
Niigata Konan High School	〒950-0948 Niigata-shi Chuo-ku Meike Minami 3-6-1	025-283-0326	General
Niigata Shogyo High School	〒951-8131 Niigata-shi Chuo-ku Hakusan Ura 2-68-2	025-266-0101	Integrated Business, Information Processing, International Studies,
Niigata Koyo High School	〒950-0121 Niigata-shi Konan-ku Kameda Koyo 4-3-1	025-382-3221	General
Shirone High School	〒950-1214 Niigata-shi Minami-ku Jogesuwaki 1214	025-372-2185	General
Niigata Nishi High School	〒950-2156 Niigata-shi Nishi-ku Uchino Sekiba 4699	025-262-1561	General
Niigata Kogyo High School	〒950-2024 Niigata-shi Nishi-ku Koshin Nishi 1-5-1	025-266-1101	Machinery, Electrical, Public Works, Architectural Design Course, Architectural Equipment Course, Industrial Chemistry
Maki High School	〒953-0044 Niigata-shi Nishikan-ku Makiotsu 30-1	0256-72-2351	General
Maki Sogo High School	〒953-0041 Niigata-shi Nishikan-ku Makiko 4295-1	0256-72-3261	Integrated
Yoshida High School	〒959-0265 Tsubame-shi Yoshida Higashi-machi 16-1	0256-93-3225	General
Bunsui High School	〒959-0113 Tsubame-shi Oigashima 104-4	0256-98-2191	General
Sanjo High School	〒955-0803 Sanjo-shi Tsukioka 1-2-1	0256-35-5500	General
Sanjo Higashi High School	〒955-0053 Sanjo-shi Kita Irikura 2-9-36	0256-38-6461	General

Name	Address	Telephone	Courses of Study
Niigata Ken-O Kogyo High School	〒955-0823 Sanjo-shi Higashi Honjoji 13-1	0256-32-5251	Mechanical Engineering, Electronic Machinery, Information Processing, Architectural Engineering
Sanjo Shogyo High School	〒955-0044 Sanjo-shi Tajima 2-24-8	0256-33-2631	Integrated Business,
Kamo High School	〒959-1313 Kamo-shi Saiwai-cho 1-17-13	0256-52-2030	General
Kamo Norin High School	〒959-1325 Kamo-shi Jinmei-cho 2-15-5	0256-52-3115	Production Technology, Environmental, Food Processing, Bioengineering
Mitsuke High School	〒954-0051 Mitsuke-shi Honsho 1-20-6	0258-62-0080	General
Nagaoka High School	〒940-0041 Nagaoka-shi Gakko-cho 3-14-1	0258-32-0072	General, Science and Math
Nagaoka Ote Senior High School	〒940-0857 Nagaoka-shi Okita 2 chome 357	0258-32-0096	General, Home Economics
Nagaoka Koryo High School	〒940-2184 Nagaoka-shi Kita-machi Kawahara 1030-1	0258-29-1300	General
Nagaoka Nogyo High School	〒940-1198 Nagaoka-shi Magari Aramachi 3-13-1	0258-37-2266	Manufacturing Technology, Agricultural Economy, Living Environment
Nagaoka Kogyo High School	〒940-0084 Nagaoka-shi Saiwai-cho 2-7-70	0258-35-1976	Machine Engineering, Electronics, Engineering, Materials Engineering, Manufacturing Design
Nagaoka Shogyo High School	〒940-0817 Nagaoka-shi Nishi Katakai-machi Oki 1726	0258-35-1502	Integrated Business, Information Business
Shotokukan High School	〒940-2401 Nagaoka-shi Yoita-machi Higashi-Yoita 173	0258-72-3121	General
Tochio High School	〒940-0293 Nagaoka-shi Kanazawa 1-2-1	0258-52-4155	Integrated
Ojiya High School	〒947-0005 Ojiya-shi Asahi-cho 7-1	0258-83-2262	General
Ojiya Nishi High School	〒947-0028 Ojiya-shi Jounai 3-3-11	0258-82-4335	Integrated
Koide High School	〒946-0043 Uonuma-shi Aoshima 810-4	025-792-0220	General

Name	Address	Telephone	Courses of Study
Kokusai Joho High School	〒949-7302 Minamiuonuma-shi Urasa 5664-1	025-777-5355	International Culture, Information Science
Muikamachi High School	〒949-6633 Minamiuonuma-shi Yokawa 1380-2	025-772-3224	General
Hakkai Senior High School	〒949-6632 Minamiuonuma-shi Yokawa 1276	025-772-3281	General
Shiozawa Shoko High School	〒949-6433 Minamiuonuma-shi Izumimoridera 701-1	025-782-1111	Machine Systems, Commerce
Tokamachi High School	〒948-0083 Tokamachi-shi Honcho-nishi 1-203	025-752-3575	General
Tokamachi High School Matsunoyama Branch School	〒942-1405 Tokamachi-shi Matsunoyama Hikaruma 39-1	025-596-2025	General
Tokamachi Sougou High School	〒948-0055 Tokamachi-shi Takayama 461	025-752-3186	Integrated
Matsudai High School	〒942-1526 Tokamachi-shi Matsudai 4003-1	025-597-2064	General
Kashiwazaki High School	〒945-0065 Kashiwazaki-shi Gakko-cho 4-1	0257-22-4195	General
Kashiwazaki Tokiwa High School	〒945-0047 Kashiwazaki-shi Hisumi 1-5-57	0257-23-6205	General
Kashiwazaki Sogo High School	〒945-0826 Kashiwazaki-shi Motoshiro-cho 1-1	0257-22-5288	Integrated
Kashiwazaki Kogyo High School	〒945-0061 Kashiwazaki-shi Sakae-cho 5-16	0257-22-5178	Machinery, Electronics, Electrical, Industrial Chemistry
Kubiki High School	〒949-3216 Joetsu-shi Kakizaki-ku Kakizaki 7075	025-536-2379	General
Takada High School	〒943-8515 Joetsu-shi Minamishiro-cho 3-5-5	025-526-2325	General, Science & Math



<b>Name</b>	<b>Address</b>	<b>Telephone</b>	<b>Courses of Study</b>
Takada High School Yasuzuka Branch School	〒942-0411 Joetsu-shi Yasuzuka Shimogata 129	025-592-2027	General
Takada Kitashiro High School	〒943-8525 Joetsu-shi Kitashiro-cho 2-8-1	025-522-1164	General, Lifestyle
Takada Nogyo Senior High School	〒943-0836 Joetsu-shi Higashishiro-cho 1-4-41	025-524-2260	Biological Resources, Food Science, Agricultural Engineering
Joetsu Sogo Gijutsu High School	〒943-8503 Joetsu-shi Motoshiro-cho 3-1	025-525-1160	Machinery Development Engineering, Electrical Information, Environmental Architecture, Hazard Prevention in Civil Engineering
Takada Shogyo High School	〒943-8550 Joetsu-shi Oasa Nakadahara 90-1	025-523-2271	Integrated Business
Yuko High School	〒944-0131 Joetsu-shi Itakura-ku Hari 583-3	0255-78-2003	General
Arai High School	〒944-0031 Myoko-shi Tamachi 1-10-1	0255-72-4151	Integrated
Itoigawa High School	〒941-0047 Itoigawa-shi Oasa Hiraushi 248-2	025-552-0004	General
Itoigawa Hakurei High School	〒941-0063 Itoigawa-shi Kiyosaki 9-1	025-552-0046	Integrated
Kaiyo High School	〒949-1352 Itoigawa-shi Oaza No 3040	025-566-3155	Marine resources, Marine development
Sado High School	〒952-1322 Sado-shi Ishida 567	0259-57-2155	General
Hamochi High School	〒952-0504 Sado-shi Hamochi-hongo 410	0259-88-3155	General
Sado Sogo High School	〒952-0202 Sado-shi Kurinoe 377-1	0259-66-3158	Integrated

\*All schools listed below are Niigata Prefectural Schools except those marked with an asterisk.

## Public High Schools: Part-time ・ Correspondence

Name	Address	Telephone	Courses of Study
Arakawa High School	〒959-3194 Murakami-shi Sakamachi 2616-4	0254-62-2503	General, Morning only (Part-time, Units system)
Nishi Shibata High School	〒957-8522 Shibata-shi Nishizonomachi 3-1-2	0254-22-2009	General ・ Mornings (Part-time, credit system)
Niigata Suiko High School	〒950-1112 Niigata-shi Nishi-ku Kanamaki 1657	025-377-2175	General ・ Morning (Part-time, Units system) Correspondence, Units system
Niigata Shiritsu* Meikyo High School	〒950-0075 Niigata-shi Chuo-ku Nuttari Higashi 6-11-1	025-246-3535	General ・ Morning/Evening (Part-time, Units system)
Nagaoka Meitoku High School	〒940-0093 Nagaoka-shi Suido-cho 3-5-1	0258-33-5821	General ・ Morning/Evening (Part-time, Units system)
Horinouchi High School	〒949-7413 Uonuma-shi Horinouchi 3720	025-794-3317	General ・ Morning/Afternoon (Part-time, Units system)
Tokamachi High School	〒948-0083 Tokamachi-shi Honcho-nishi 1-203	025-752-3575	General
Izumozaki High School	〒949-4352 Santo-gun Izumozaki-machi, Daimon 71	0258-78-3125	General ・ Morning (Part-time, Units system)
Takada Minamishiro High School	〒943-0837 Joetsu-shi Minamishiro-cho 3-3-8	025-523-7672	General ・ Morning (Part-time, Units system/Correspondence, Units system)
Sado High School, Aikawa Extension	〒952-1501 Sado-shi Shimoaikawa 162	0259-74-3257	General ・ Morning (Part-time, Units system)

## Private High Schools: Full-time

Name	Address	Telephone	Courses of Study
Niigata Meikun High School	〒950-0116 Niigata-shi Kounan-ku Kitayama 1037-banchi	025-257-2131	General
Niigata Seishin Joshi High School	〒950-2101 Niigata-shi Nishi-ku Ikarashi Ichino-cho 6370	025-269-2041	General
Hokuetsu High School	〒950-0916 Niigata-shi Chuo-ku Yoneyama 5-12-1	025-245-5681	General
Niigata Seiryu High School	〒951-8121 Niigata-shi Chuo-ku Suidou-cho 1-5932	025-266-8131	General
Keiwa Gakuen High School	〒950-3112 Niigata-shi Kita-ku Tayuhama 325	025-259-2391	General
Niigata Daiichi High School	〒951-8141 Niigata-shi Chuo-ku Sekishin 3-3-1	025-231-5643	General

Name	Address	Telephone	Courses of Study
Tokyo Gakkan Niigata High School	〒950-1141 Niigata-shi Chuo-ku Shumoku 185-1	025-283-8857	General
Nihon Bunri High School	〒950-2035 Niigata-shi Nishi-ku Shindori 1072	025-260-1000	General
Shibata Chuo High School	〒957-8533 Shibata-shi Sone 570	0254-27-2466	General
Chuetsu High School	〒940-8585 Nagaoka-shi Niibo-machi 1371-1	0258-24-0203	General
Teikyo Nagaoka High School	〒940-0044 Nagaoka-shi Sumiyoshi 3-9-1	0258-36-4800	General
Kamo Gyosei High School	〒959-1322 Kamo-shi Gakko-cho 16-18	0256-52-2000	General, Nursing
Niigata Sangyo University High School	〒945-1397 Kashiwazaki-shi Yasuda 2510-2	0257-24-6644	General
Joetsu High School	〒943-0892 Joetsu-shi Teramachi 3-4-34	025-523-2601	General
Sekine Gakuen High School	〒943-8561 Joetsu-shi Onuki 2-9-1	025-523-2702	General
Kaishi Kokusai High School	〒959-2637 Tainai-shi Nagahashigami 439-1	0254-44-3330	General

### Private High Schools: Correspondence

Name	Address	Telephone	Courses of Study
Kaishi Gakuen High School	〒950-0925 Niigata-shi Chuo-ku Bentenbashi-dori 1-4-1	025-287-3390	General (Correspondence)
Soushin High School	〒954-0051 Mitsuke-shi Honjo 2-2-21	0258-62-0703	General (Correspondence)
Nagaoka Eichu High School	〒940-1154 Nagaoka-shi Miyasakae 3-16-14	0258-31-6771	General (Correspondence)

※There are also other private correspondence high schools throughout Japan.

### Public Vocational High Schools (National)

Name	Address	Telephone	Courses of Study
Nagaoka Kogyo Vocational High School	〒940-8532 Nagaoka-shi Nishi Katakai-machi 888	0258-32-6435	Mechanical Engineering, Electrical, Electronics, Systems Engineering, Electronics and Control, Engineering, Materials Engineering, Urban Environmental Engineering

#### 《Reference》

- “Guideline of Entrance Examination for Niigata Prefectural Public High Schools (新潟県公立高等学校入学者選抜について)” by the Niigata Prefecture Board of Education
- ”Guidance for Entering High School for Non-Japanese Speakers & their Parents (日本語を母語としない子と親のための進学ガイダンス)” by the Association of Nagano Prefecture for Promoting International Exchange
- ”2009 Guidance for Entering High School for Non-Japanese Speakers & their Guardians (日本語を母語としない子どもと保護者の高校進学ガイダンス)” by the Saitama International Association
- ”Multilingual Living Information –Education” Page from the Council of Local Authorities for International Relations(CLAIR) Homepage

This document is based on the above-listed references and adapted from “For parents and their children whose mother tongue is not Japanese-Guidance of Going to high school” (2009), prepared by the Niigata University International Exchange Support Center with the participation of associated international students.

Translated from the original Japanese in July 2009 by:

Mark Tumiski, Coordinator of International Relations

Motoko Koizumi, English Language Coordinator

International Affairs Division, Niigata Prefectural Government

Edited and published by:

## Niigata International Association

Bandaijima Building (Toki Messe) 2<sup>nd</sup> floor

5-1 Bandaijima, Chuo-ku, Niigata City 950-0078

TEL : 025-290-5650 FAX : 025-249-8122

E-mail : [nia21c@niigata-ia.or.jp](mailto:nia21c@niigata-ia.or.jp)

URL : <http://www.niigata-ia.or.jp>